

REIDL IMAGING

Photographic Solutions Sensor Swabs and Eclipse Instructions for use

INTRODUCTION

These notes describe how to use Photographic Solutions Inc Sensor Swabs and Eclipse to clean the sensor in a digital Single Lens Reflex Camera (DSLR).

Sensor Swabs

Sensor Swabs are clean room manufactured cleaning tools designed to clean the delicate CCD or CMOS sensor inside DSLR Cameras. Unlike compact digital cameras, DSLR cameras feature removable lenses. In normal everyday use, removing the lens allows dirt and dust to enter the camera, some of which will eventually settle onto the sensor. The result is unsightly spots on images, typically seen against light backgrounds such as skies.

You can easily check whether the camera sensor needs cleaning by taking a photograph of a clean light background using a small aperture (typically F 16 and above). View the image on a computer monitor and if possible, perform a levels command. Any contamination will then be revealed.

Eclipse Optic Cleaning System

ECLIPSE lens cleaner is the highest purity lens cleaner available. It dries as quickly as it can be applied leaving no residue.

ECLIPSE is the recommended optical glass cleaner for Tokina Hoya Kenko USA, the US distributor for Hoya filters and Tokina lenses

Caution.

Eclipse is highly flammable. Contains Methanol.

The product burns with no visible flame. Keep away from heat, flame, sparks and ignition sources. Do not get in eyes. Irritation may occur. Wash eyes thoroughly with plenty of fresh water. Harmful if swallowed. Induce vomiting. Avoid breathing vapor. May cause headache or nausea. Use only in a well ventilated area. For more information refer to MSDS.

IMPORTANT

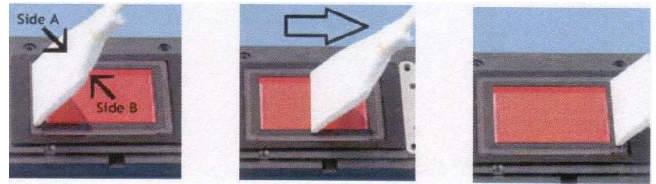
To perform a cleaning procedure, it is necessary to open the shutter on the camera to gain access to the sensor. It is essential that you are fully aware of how to open the shutter and keep the shutter open while cleaning the sensor. If the shutter closes while cleaning is taking place the camera will be damaged. Please refer to the camera manufacturer's instructions on how to open the shutter for cleaning purposes. If you are not 100% confident in this process, please return your camera to the manufacturer for sensor cleaning.

Cleaning Procedure

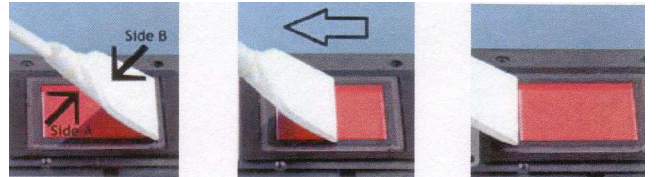
- (1) Check you have the correct size Sensor Swabs for your model camera.
- (2) Prepare a clean, dust-free area with space for the camera, the Sensor Swabs and the Eclipse
- (3) Cut open a Sensor Swab bag at the handle end. Remove the lid from the Eclipse bottle.
- (4) Remove the lens from the camera and open the shutter according to the manufacturer's directions.
- (5) Remove the swab from the bag and squeeze 2 – 4 drops of Eclipse 4 onto the end of the swab.



- (6) Clean the sensor as illustrated below.

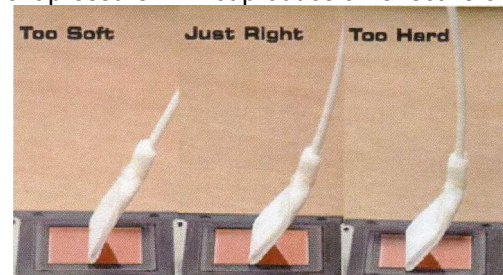


- 1 Carefully insert the swab into the camera starting at one end of the sensor.
- 2 Wipe the swab down the length of the sensor in one direction
- 3 Until the whole sensor has been wiped. Note how side B is used for the first wipe.



- 4 Now lean the swab in the reverse direction.
- 5 Then wipe back across the sensor.
- 6 Until the whole sensor has been wiped. Note how side A is used for the second wipe.

- (7) Use sufficient pressure during the cleaning action. Insufficient pressure will not produce an effective clean.



- (8) Try not to touch the sides of the shutter chamber while cleaning. This can dislodge particles onto the sensor
- (9) Carefully remove the swab and close the camera shutter.
- (10) Refit the lens and test.
- (11) Repeat if necessary with a fresh swab. Never reuse a swab.

Refer to www.reidimaging.eu or www.photosol.com for further guidance.

Precautions

Ensure that contaminating particles cannot fall from your body or clothing into the shutter chamber during the cleaning procedure. Typically, contaminating particles are too small to be seen with the naked eye. Do not over saturate the swab with Eclipse. 2-4 drops are sufficient. The fluid should evaporate almost immediately after swiping. Practice first until you are confident in the procedure.